

CRIMP-JUNCTION

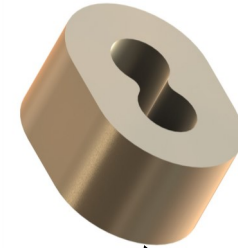
APPLICATION

Thermocouple wire can be fabricated into accurate and dependable temperature sensors by joining the thermo elements at the sensing end utilizing the "Crimp-Junction". Made of pure nickel, the "Crimp-Junction" offers a convenient method for fabricating thermocouples at the point of use. Two sizes, 24-gage and 20-gage, are available in order to accommodate the most utilized wire sizes. The Crimp-Tool has the capability to form either size.

CRIMP-JUNCTION 24-GAGE	ODER CODE: 81307114	PRICE: \$1.00/EA
HEX SIZE AFTER CRIMP 1/16"		100/PKG

CRIMP-JUNCTION 20-GAGE	ODER CODE: 81307053	PRICE: 1.00/EA
HEX SIZE AFTER CRIMP 3/32"		100/PKG

CRIMP-JUNCTION-TOOL 1252	ODER CODE: 10079071	PRICE: \$225.
---------------------------------	----------------------------	----------------------



Thermo elements are inserted into crimp-junction.



Actual Size—before and after crimping for 20-GAGE Crimp-Junction

Thermo elements are joined to form the "hot" junction by utilizing the "Crimp-Junction" and crimp-tool.

